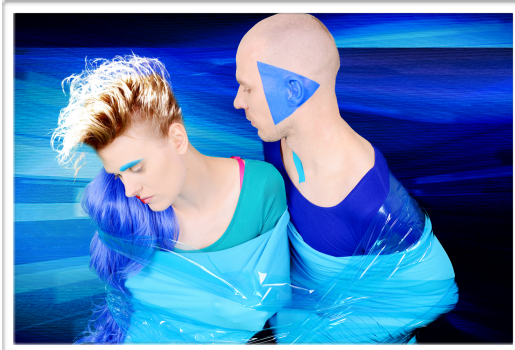


DARK~asian~ENERGY

In autumn 2014 the German duo **CLUBbleu** went on a Singapore Field Recording trip trying to catch the most characteristic and unique urban sounds. For 2 months the duo dived into this pulsating multi-cultural metropolis and returned with a bunch of extraordinary singaporian soundscapes to Frankfurt to produce their upcoming CD called "DARK~asian~ENERGY [singa~core album]. The show to-night is a CLUBbleu solo performance by Felix Leuschner, who presents a lucky dip of their new songs.

The German duo **CLUBbleu** works with analogue synthesizers, e-drums, field recordings and live-electronics. Being greatly inspired by Electro-Acoustic music, Electronica and Industrial, CLUBbleu create their own musical cosmos based on urban soundscapes, sparkling synths, deep drones and creepy breakbeats. Varied kinds of interfaces, controllers and sensors are integrated in their performance. For their audio-visual live shows, CLUBbleu collaborates regularly with different visual artists.

Felix Leuschner is a classically trained drummer and composer with the main focus on music theatre pieces, as well as chamber music and vocal pieces in connection to live-electronics. Strong influences by visual arts and architecture mark essential components in his compositions. As part of CLUBbleu he plays e-drums, using the instrument as a giant controller for real time sound synthesis.



Julia Mihály is a composer-performer. She studied classical singing and electronic composition. The crossover of different music styles, such as contemporary vocal music, old school computer game music, trashy pop music tunes and electro-acoustic music, is probably the most outstanding feature of her compositions and performances. Within CLUBbleu she plays analogue synths, game controllers and toy instruments connected to Max /MSP.

www.clubbleu.de • www.juliamihaly.net • www.felixleuschner.de



Soundislands Festival / Si15 2nd International Symposium on Sound and Interactivity
<http://www.soundislands.com/si15/>

21 August 2015, Saturday @ ArtScience Museum, Singapore

Conversations

14 30h - 17 30h

Charles Spence
Stefania Serafin
Daniel Belton
Joyce Beetuan Koh
Suzy Styles
PerMagnus Lindborg

CLUBbleu Performance

17 30h - 18 00h



ArtScience
Museum
MARINA BAY SANDS

Charles Spence on “Cuisine: scent, crunch, palate”

is the head of the Crossmodal Research Laboratory at Oxford University. He is interested in how people perceive the world around them. In particular, how our brains manage to process the information from each of our different senses to form the extraordinarily rich multisensory experiences that fill our daily lives. He has consulted for a number of multinational companies advising on various aspects of multisensory design, packaging, and branding. The author of over 500 published articles, Spence became widely known when he received the 2008 IG Nobel Prize for Nutrition for his groundbreaking work on the ‘sonic crisp’.

Charles is a Si15 keynote speaker.

www.psy.ox.ac.uk/team/principal-investigators/charles-spence

Stefania Serafin on “Objects: what’s an instrument?”

is professor with "special responsibilities in sound for multimodal environments" in the Medialogy section at Aalborg University in Copenhagen. She teaches and researches on sound models and sound design for interactive media and multimodal interfaces. Her book *Sonic Interaction Design* (MIT Press, 2013) deals with the exploitation of sound as one of the principal channels to convey information, meaning, and aesthetic/emotional qualities in interactive contexts. Research interests include: Multimodal interfaces, interactive sonification, and auditory perception and cognition. Stefania is a Si15 keynote speaker. www.imi.aau.dk/~sts

PerMagnus Lindborg, moderator

is assistant professor at School of Art, Design and Media, Singapore since 2007, and a member of the composer societies in Norway (since 1995) and in Singapore. His research focuses on psychoacoustics, spatial sound, interactive performance, and perception. Notable publications include *IRCAM-Delatour* - a chapter by Lindborg in the *OM Composer’s Book 2008*; peer-reviewed articles have been published in *Applied Acoustics*, *LNCS-Springer Verlag*, *eContact*, and *NASS*, and in proceedings of *SMC*, *ICMC*, *ICME*, *ICMPC* and *ICAD*. He has led eight research grants while at NTU, including two AcRF Tier 1. He serves as Music Coordinator on the Board of the International Computer Music Association. PerMagnus is a Si15 chair. <http://www.permagnus.org/>

Suzy Styles on “Language: spoken, heard, connected”

investigates how the mind handles that most human of processes: Language. As a psycholinguist, she uses methods from cognitive science, experimental psychology and neuroscience to explore the way that language develops in infancy, the way it functions in the mind of the individual, and the way it changes over the life-course. In short, how each person’s individual’s language experience contributes to their processing of natural language, and how symbols and sounds shape perception and the underlying representation of language. Suzy is Si15 proceedings chair.

www.psychology.hss.ntu.edu.sg/People/Pages/suzystyles.aspx

Daniel Belton on “Movement: when one falls”

is a choreographer and filmmaker with a background in visual arts and contemporary dance. He is the Artistic Director of the “Good Company Arts, founded in 1997, a company that is known for its unique multidisciplinary approach to production. In 2010, he was awarded the Creative New Zealand Choreographic Fellowship. Daniel is a Soundislands Festival invited artist. During his séjour, he also conducts a two-day graduate workshop at the School of Art Design Media. www.goodcompanyarts.com/main.html

Joyce Beetuan Koh on “Stage: illusions and involvement”

is a composer and creative director whose output ranges from concert music, dance collaborations, text-sound production to interactive sound installations. Her work explores notions of sonic canvas, space, and the theatricality of music performance. Her sound world has been described as “engaging the intellect and requiring a different approach”.

Joyce is Si15 artwork chair.

www.nafa.edu.sg/admissions/why-nafa/teaching-staff/profile/dr-joyce-koh-beetuan